



MERLIN MAGIX™ Integrated System WinSPM R3

The User-Friendly, Graphical Interface That Makes System Programming and Maintenance Easier Than Ever Before



WinSPM's user-friendly, graphical interface lets you perform system programming with point-and-click ease.

Programming the **MERLIN MAGIX™** Integrated System is quick and simple, with WinSPM (Windows[®]-based System Programming and Maintenance) software from Lucent Technologies.

WinSPM software is specifically designed to help **MERLIN MAGIX** system managers do their jobs more easily, with:

- Convenient access to current system information
- The ability to make comprehensive, real-time programming changes from a PC interface
- Centralized programming of multiple **MERLIN MAGIX** systems located at different sites.

In addition, WinSPM's familiar graphical user interface shortens the learning curve and provides point-and-click control, to help your business set up and use your **MERLIN MAGIX** system to maximum advantage.

A New Yet Familiar Look and Feel

Working with the **MERLIN MAGIX** Integrated System as well as **MERLIN LEGEND** system release 6.0 or later, WinSPM replaces DOS-based programming with a more user-friendly Windows environment. (For earlier system releases, Standard SPM emulates DOS functionality in a more graphical format, offering predefined programming macros, report browsing, and point-and-click navigation.)

WinSPM provides on-screen icons and menu choices to help guide you through the administration process. For example, since WinSPM enforces the rules that are preprogrammed into the **MERLIN MAGIX** system, the quick access interface offers suggestions for the correct command.

The WinSPM Standard SPM interface lets you use the mouse rather than function keys, saving the time and trouble of memorizing key sequences. In addition, WinSPM provides step-by-step help for

administering features such as Automatic Route Selection (ARS) or other complex tasks. WinSPM standard mode also allows you to customize commands for up to five macros, for simplified programming of redundant tasks.

Intelligent, Centralized Telephone Programming

WinSPM gives you a full picture of key tasks and station programming, instead of isolated features or function screens. This enables you to implement smart programming system-wide, for more effective use of your **MERLIN MAGIX** Integrated System.

For *centralized programming* of telephones—for instance, to assign standard features to particular telephone buttons throughout your system—you can save the programming to a template and then apply it to other telephones. You can even print out the labels to make it easier for users to take advantage of their telephone features.

WinSPM provides a variety of templates and forms for fast, easy administration of the features you use—and, most likely, need to change—most often. For example, for telephone programming, simply select an extension to see a depiction of the telephone and labels of what each button does. To program or redefine telephone features, simply click on a button.

System-Wide Programming

WinSPM makes it easy to perform and duplicate a variety of programming tasks system-wide. For example, the *Allowed/Disallowed Lists* feature enables your system manager to create lists of telephone numbers that users are allowed or not allowed to dial. Used in conjunction with calling restrictions, it ensures that each extension complies with your business calling guidelines and helps control costs.

A unique *System Inventory* feature provides a visual layout of your **MERLIN MAGIX** system in a report format. It describes the characteristics of the hardware components in each system slot, including all modules and versions. So, your system manager can do a quick inventory of the system as needed. Other features easily programmed by using WinSPM include:

- Automatic Route Selection
- Call Pickup Groups
- Calling Groups
- Coverage Groups
- Speed Dial
- Much more.

You can also maintain telephone labels across the system, programming the text and printing the information as a user directory.



WinSPM allows you to view, program, and print the text for telephone labels.

Managing Multiple Sites as Easily as One

In addition to enabling centralized telephone programming, WinSPM provides easy communications management across your entire business—including multiple sites.

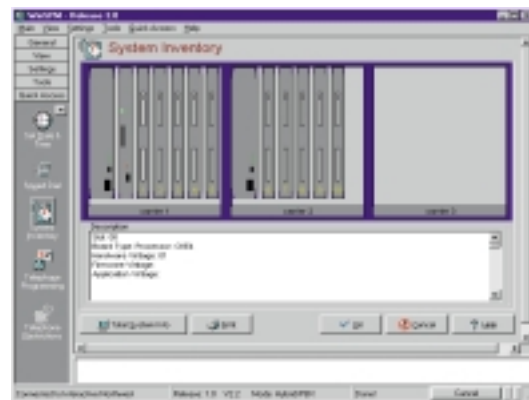
WinSPM's graphical representation of your **MERLIN MAGIX** system inventory can be accessed remotely, allowing your system manager to inventory any site's system as needed. Any time the system manager connects or disconnects with your **MERLIN MAGIX** system, WinSPM creates a maintenance log of key events, including any errors, and stores it on the administrative PC. WinSPM also maintains separate site-specific reports, which can be annotated with notes and exported from the database or copied to a text file for archiving.

Easy Links to Online Help

MERLIN MAGIX WinSPM also provides an interface to connect you with online help via an Internet browser. This interface supports up to four programmable hyperlinks to the online resources that are most valuable to you and your business. So, for example, you can be just a point and click away from the **MERLIN MAGIX** Integrated System home page, where you can learn about new offers.

Unique Lucent Value

MERLIN MAGIX WinSPM is backed by the Lucent Technologies commitment to meeting your communications needs for everything from planning, consultation, and solution integration through ongoing maintenance and support.



*A unique feature allows you to access any site's **MERLIN MAGIX** system inventory remotely.*

To learn more, talk to your Lucent Technologies Representative, Authorized Dealer, or Sales Agent. Or, for late-breaking news, visit our Web site.

www.lucent.com/smallbusiness

System Requirements

- Windows 95, Windows 98, or Windows NT version 4.0 or higher²
- IBM-compatible PC, 486 or higher (Pentium recommended)³
- Minimum 40 MB hard drive space and 16 MB RAM (32 MB recommended)
- I-COM port
- A modem with auto baud capabilities (PEC 2569-839 recommended), with specific drivers loaded
- Video requirements: Minimum 256 colors
- Font size option in the Windows display properties settings should be set to small fonts



¹ Windows is a registered trademark of Microsoft Corporation.

² Windows NT is a registered trademark of Microsoft Corporation.

³ IBM is a registered trademark of IBM Corporation, and Pentium is a registered trademark of Intel Corporation.